

YEAR 2014

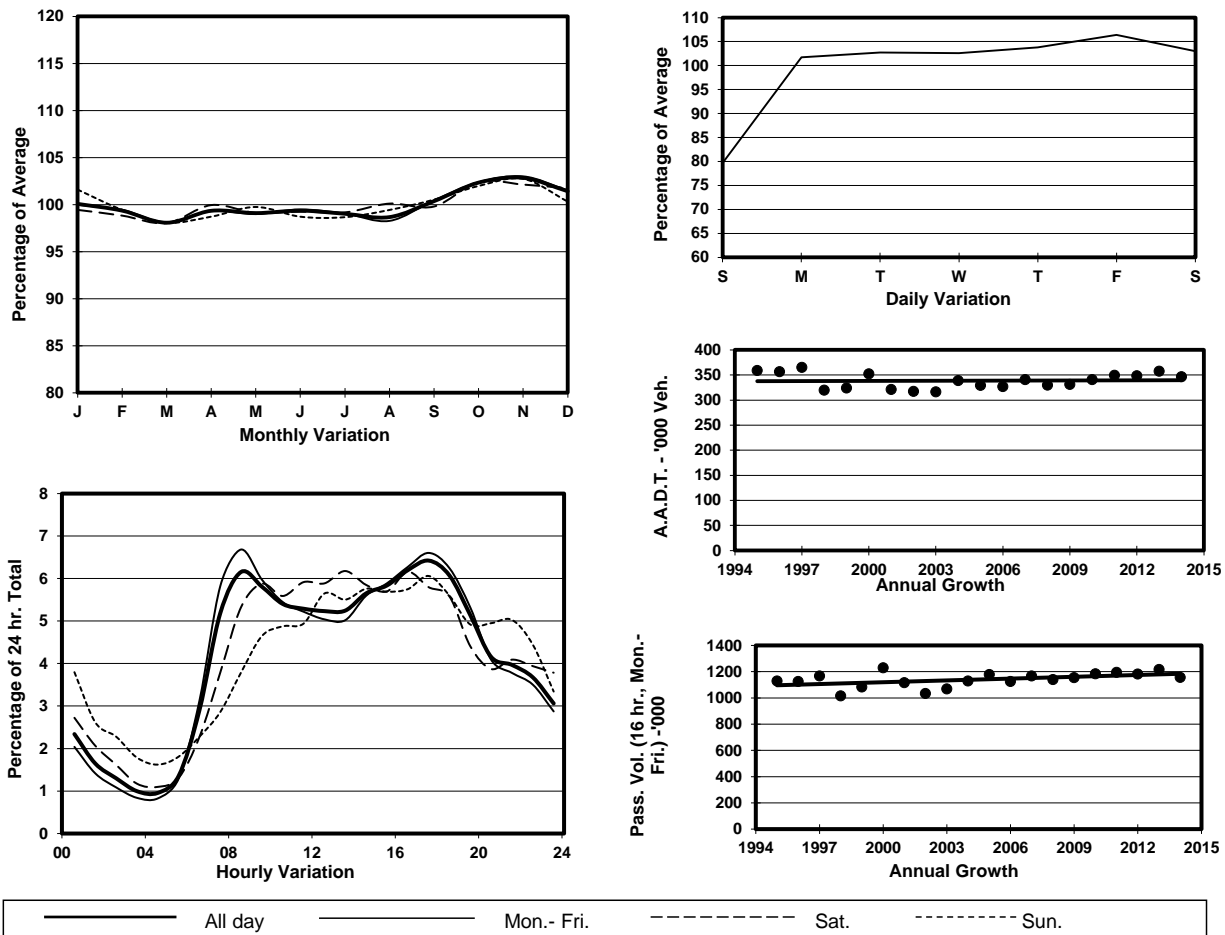
Location

Screenline K-K(West end of Kwun Tong)

Stations on Cordon/Screenline

3004, 4216, 4217, 4218 and 4219

1. TRAFFIC FLOW VARIATION AND GROWTH



2. TRAFFIC CHARACTERISTICS (BY DIRECTION)

Parameter	All - Day	Mon. - Fri.	Sat.	Sun.
EAST BOUND				
A.A.D.T.	176090	183500	183940	144800
R 12 / 24 - %	67.9	69.3	66.8	60.1
R 16 / 24 - %	85.1	86.3	83.3	79.6
AM Peak Hour	0800-0900	0800-0900	0900-1000	0900-1000
One-way flow at AM peak hour	10910	12420	10390	6480
T - % (AM)	-	11	-	-
PM Peak Hour	1700-1800	1700-1800	1600-1700	1700-1800
One-way flow at PM peak hour	10960	11620	11340	9110
T - % (PM)	-	11.1	-	-
Prop.of commercial vehicles - 16 hr.	-	11.3	-	-
WEST BOUND				
A.A.D.T.	170470	179030	177060	134350
R 12 / 24 - %	69.2	70.3	68.5	62.2
R 16 / 24 - %	85.8	86.7	84.6	81.4
AM Peak Hour	0800-0900	0800-0900	0900-1000	0900-1000
One-way flow at AM peak hour	10430	11810	10830	6500
T - % (AM)	-	10.1	-	-
PM Peak Hour	1700-1800	1700-1800	1600-1700	1700-1800
One-way flow at PM peak hour	11300	12320	10890	7810
T - % (PM)	-	9.7	-	-
Prop.of commercial vehicles - 16 hr.	-	10.8	-	-

3. OTHER INFORMATION AND COMMENT

4. Vehicle classification and occupancy - Monday to Friday

Time		Class of vehicle									
		Motor	Private	Taxi	Private	PLB	Goods veh.		Non	Fr. Bus	
		Cycle	Car		LB		Light	M & H	Fr. Bus	SD	DD
0700-0800	Pro	5.0	34.2	20.7	3.8	6.4	15.0	5.5	4.6	0.1	4.8
	Ocp	1.1	1.4	2.0	5.2	11.4	1.4	1.2	18.9	31.9	50.0
0800-0900 Peak Hour	Pro	4.7	45.7	18.5	1.4	5.0	14.2	4.1	2.3	0.1	4.0
	Ocp	1.1	1.3	2.0	6.9	13.7	1.6	1.3	24.4	28.2	56.3
0900-1000	Pro	2.9	37.8	20.8	1.1	4.5	21.2	5.7	2.0	0.1	3.9
	Ocp	1.1	1.3	1.9	2.7	11.7	1.5	1.3	17.4	27.6	29.6
1000-1100	Pro	2.7	34.4	20.1	0.8	4.2	25.7	7.0	1.0	0.1	4.0
	Ocp	1.1	1.4	1.9	2.1	9.8	1.5	1.3	7.9	17.2	23.6
1100-1200	Pro	2.6	34.5	17.3	1.3	4.2	27.8	7.2	1.5	0.1	3.6
	Ocp	1.1	1.4	1.9	2.2	9.7	1.4	1.5	8.4	15.8	23.1
1200-1300	Pro	2.7	36.7	18.7	2.3	4.4	23.1	6.5	2.1	0.1	3.5
	Ocp	1.0	1.4	2.0	5.1	8.3	1.5	1.3	15.8	23.1	24.4
1300-1400	Pro	2.9	33.8	18.2	1.3	3.7	27.0	7.7	1.7	0.1	3.7
	Ocp	1.1	1.4	2.1	2.8	9.3	1.5	1.3	11.0	19.9	25.7
1400-1500	Pro	2.8	36.3	17.5	0.9	3.2	27.3	6.9	1.6	0.1	3.3
	Ocp	1.0	1.5	2.0	1.5	9.8	1.5	1.3	18.0	24.9	24.6
1500-1600	Pro	3.4	35.1	19.1	2.2	3.6	23.9	7.0	2.4	0.1	3.2
	Ocp	1.1	1.5	1.9	6.3	10.7	1.5	1.3	19.5	13.1	28.1
1600-1700	Pro	3.4	35.8	19.0	2.3	3.4	23.7	5.8	3.1	0.1	3.5
	Ocp	1.1	1.5	1.9	3.9	12.9	1.5	1.2	11.1	15.4	32.5
1700-1800	Pro	4.0	41.3	18.1	2.0	4.2	19.9	4.2	2.2	0.1	3.9
	Ocp	1.1	1.4	2.0	2.9	13.1	1.5	1.2	9.2	20.2	41.8
1800-1900	Pro	6.5	49.0	17.8	0.7	4.8	13.0	2.4	1.7	0.1	4.0
	Ocp	1.1	1.5	2.2	2.3	14.0	1.4	1.3	18.9	25.6	60.2
1900-2000	Pro	3.6	55.1	19.0	0.2	5.5	8.5	2.0	1.9	0.1	4.1
	Ocp	1.1	1.4	2.2	1.4	12.5	1.5	1.3	10.5	17.3	43.7
2000-2100	Pro	4.0	49.2	25.3	0.1	6.5	7.3	1.9	1.4	0.1	4.3
	Ocp	1.1	1.5	2.0	4.6	9.9	1.5	1.3	13.6	14.0	30.2
2100-2200	Pro	3.7	45.9	28.2	0.2	6.9	7.0	1.8	1.3	0.1	4.8
	Ocp	1.2	1.5	2.1	2.8	9.7	1.4	1.3	9.7	12.0	28.3
2200-2300	Pro	3.4	45.8	31.0	0.2	6.8	5.6	1.5	0.8	0.1	4.7
	Ocp	1.1	1.6	2.0	1.7	9.7	1.4	1.2	6.0	8.2	27.3
16 hours	Pro	3.7	40.4	20.0	1.4	4.7	18.7	5.0	2.1	0.1	3.9
	Ocp	1.1	1.4	2.0	4.2	11.2	1.5	1.3	15.2	19.8	35.9

Legend

Pro. Proportion of vehicles in % (Sum may not add up to 100% due to figure rounding)
Ocp. Average occupancy of vehicles
M & H Medium and Heavy